



Ysgol Esgob Morgan Church in Wales School

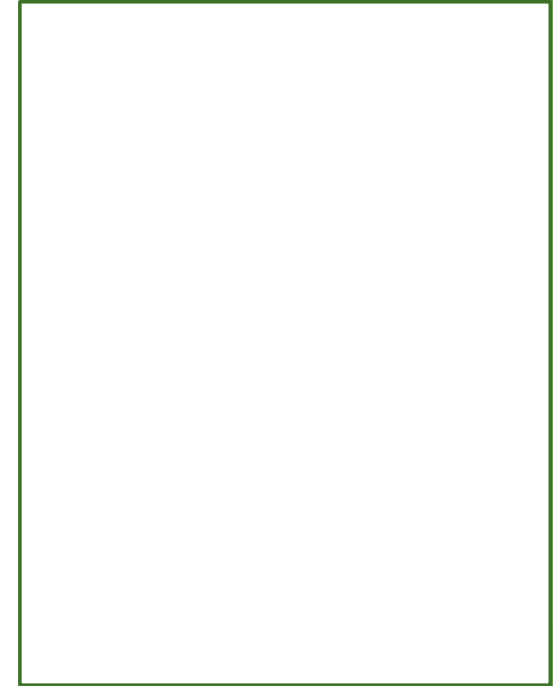


Prospectus 2023/2024

**Gyda'n Gilydd Anelwn Yn Uchel
Together, We Aim High**

Croeso / Welcome

A word from the Chair of Governors



Croeso / Welcome

A word from the Headteacher

Choosing which school for your children is an important decision. We take the responsibility of developing our children very seriously and guarantee the very best care and education for you children and look upon the next 4 years as a journey we travel together, especially now as we continue the values and ethos of a Church in Wales school.

We are very proud of our happy school, where together, we aim high. We celebrate everyone as an individual and treat all with respect. We develop a caring and stimulating environment, where children's high self-esteem allows them to take risks in learning and to learn confidently through their mistake, helping develop strategies for thinking and for independence. We encourage children to ask questions and for them to learn how to solve challenges and problems.

We make it our business to be excellent, empowering children to be happy and responsive. Children are challenged within the delivery of a creative and linked curriculum. We are an inclusive school that develops independence, responsibility, kindness and good manners through our personal, social and health education programme.

We hope that this will be the beginning of a long and successful home school partnership between us, enabling us to enrich the lives of the pupils. Working closely with parents is an essential element of our work for the success of each child. I do hope you find the prospectus informative, but if you do have any questions please do not hesitate to contact me at the school.

Mr T Redgrave





Our School Together We Aim High



Ysgol Esgob Morgan Voluntary Controlled Primary School is in the picturesque Cathedral City of St Asaph, in Denbighshire. There are currently 115 pupils between seven and eleven years of age on roll, who are taught in four single age classes.

Ysgol Esgob Morgan is named after the Bishop William Morgan who first translated the bible into Welsh.

The school benefits from beautiful, extensive field space and good playground space. Visitors to our school always comment on the lovely and positive working atmosphere we have.

We enjoy great links with St. Asaph V.P. Infant School and the transition for their pupils ensures a happy transfer. We uniquely offer parents a choice of high schools, being able to offer places for Denbigh High School, Ysgol Emrys Ap Iwan, Christ the Word, St Brigid's (Catholic Faith Led Education), Rhyl High School, Ysgol Brynhyfryd and Prestatyn High School. We also have tremendous success in building our children's ability in Welsh to offer places at Ysgol Glan Clwyd (Welsh Medium Education).



Our School Staff

Role	Staff
Headteacher	Mr T Redgrave
Deputy Headteacher	Mrs A Subacchi
ALNco	Mrs C Drumm
Y6 Teacher	Mrs C Drumm
Y5 Teacher	Mrs A Subacchi
Y4 Teacher	Mr Schrimshaw
Y3 Teacher	Mr R Roberts-Morris
HLTA	Miss J Martin
HLTA/ Teaching Assistants	Miss T Groves & Mrs W Morris
Teaching Assistant	Mrs Estlick
Admin	Mrs K Thomas-Garnett
Caretaker	Mr Roger Jones
Cleaner	Miss B Lowndes
Cook	Ms Debbie Bedford
Assistant Cook / Mid-day Supervisor	Mrs L Cywinski



Our Governing Body

Role	
Chairperson	Mr J Roberts
Vice Chair	Mrs A Matthias
Town Council	Mr J Roberts
LEA Governor	Ms R Cleveland & Mrs R Goffett
Parent Governor	Mrs M Davies, Mrs S Godden, Mrs B Williams & Mr J Jones
Community Governor	Mr W Evans & Mrs L Minshull
Teacher Governor	Mrs A Subacchi
Staff Governor	Miss J Martin
Clerk to the Governing Body	Mrs R Astle
Foundation Governor	Ms J Doran & Mrs A Matthias
Ex Officio	Mr R Matthias



ESTYN (2018) Summary

Ysgol Esgob Morgan is a very caring, inclusive school, which values all pupils as individuals. Staff know their pupils very well. Consequently, strong, respectful relationships exist throughout the school. Leaders and staff share and implement a clear vision for school improvement. The governing body supports the school well. Pupil wellbeing is at the centre of this vision. Pupils of all abilities make good progress from their starting points and the school tracks and monitors their development effectively. The provision for pupils identified as having additional learning needs is highly successful. Effective teachers, ably supported by skilful teaching assistants, deliver engaging lessons successfully. As a result, nearly all pupils show good levels of engagement, concentration and positive attitudes to learning.



Inspection Area	Judgement
Standards	Good
Wellbeing and attitudes to learning	Excellent
Teaching and learning experiences	Good
Care, support and guidance	Good
Leadership and management	Excellent



Our Vision

Together We Aim High



At Ysgol Esgob Morgan, we aim to develop and educate each child to their full potential within a loving, and caring Christian learning environment.

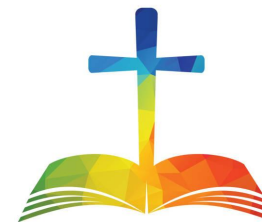
All children are cared for and nurtured spiritually, morally, intellectually, socially and emotionally.

We want our pupils to develop enthusiasm and motivation for life and for learning; taking pride in success and achievements and learning from mistakes and setbacks.

We want our pupils to embrace the future with hope, faith, confidence and compassion.



Our Christian Ethos



Being a Church in Wales School drives every aspect of our school vision and has a major impact on relationships and the experiences of all within the school community. Christian values underpin all aspects of school life.

Within our Christian ethos we will aim to :

- ▶ Create a happy, considerate and safe atmosphere where all children and staff feel valued.
- ▶ Develop a concern for the needs of others through an understanding of the Christian faith.
- ▶ Teach a broad, balanced and challenging curriculum which **extends** the children's interests and experiences.
- ▶ Recognise individual effort and **promote** high achievement in all areas.
- ▶ Develop independence, confidence and self-esteem in our pupils.
- ▶ Provide a stimulating and well-resourced learning environment with **opportunities** for imaginative and creative expression.
- ▶ Ensure equality of **opportunities** for all.
- ▶ Teach **respect** for and **appreciation** of the world around us and God's wonderful creation.
- ▶ To **promote tolerance, understanding and respect** for the religious , moral and cultural **values** of others.
- ▶ To **maintain and develop** the partnership between staff, parents, governors and learners.
- ▶ To **maintain and develop** a strong **relationship** between school, church and the wider community.





Our Pupil Values

Generosity

Compassion

Courage

Forgiveness

Friendship

Respect

Thankfulness

Trust

Perseverance

Justice

Service

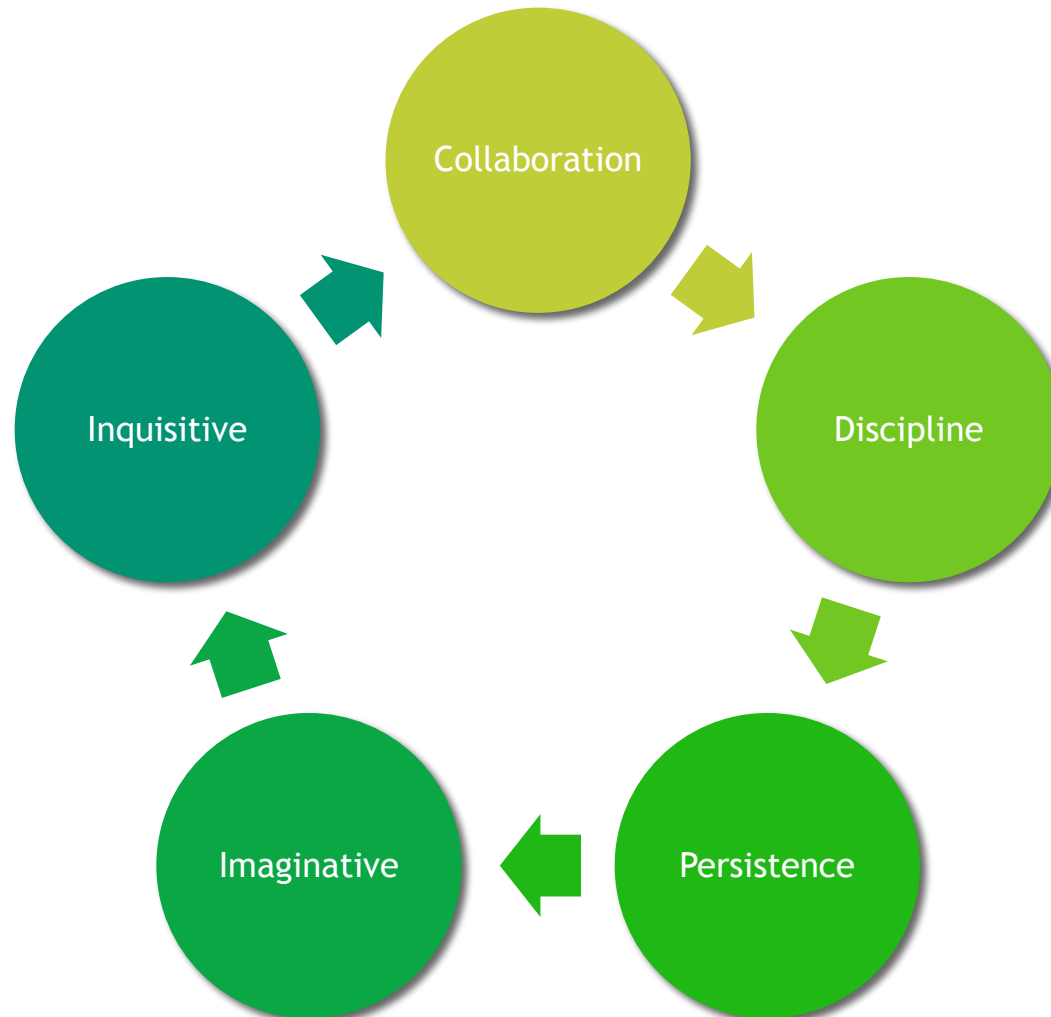
Truthfulness





Pupils Creative Habits of Mind

At Ysgol Esgob Morgan pupils are encouraged to self-reflect on the 5 Creative Habits of Mind.





The Curriculum @ Esgob

The school curriculum is everything a learner experiences in school. When designing our curriculum we have the needs of our learners at the forefront of our minds.

We carefully consider...

What should we teach?



How should we teach it?



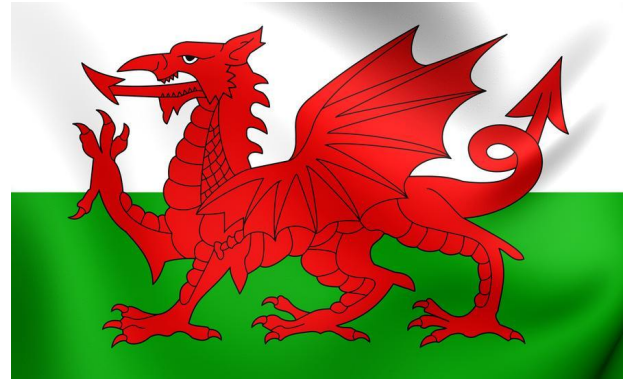
Why do we teach it?





Hiraeth / Cynefin

Hiraeth and Cynefin plays an important role throughout the pupils teaching and learning experiences. We will ensure all learners will learn about where they live, and what is so special about it.

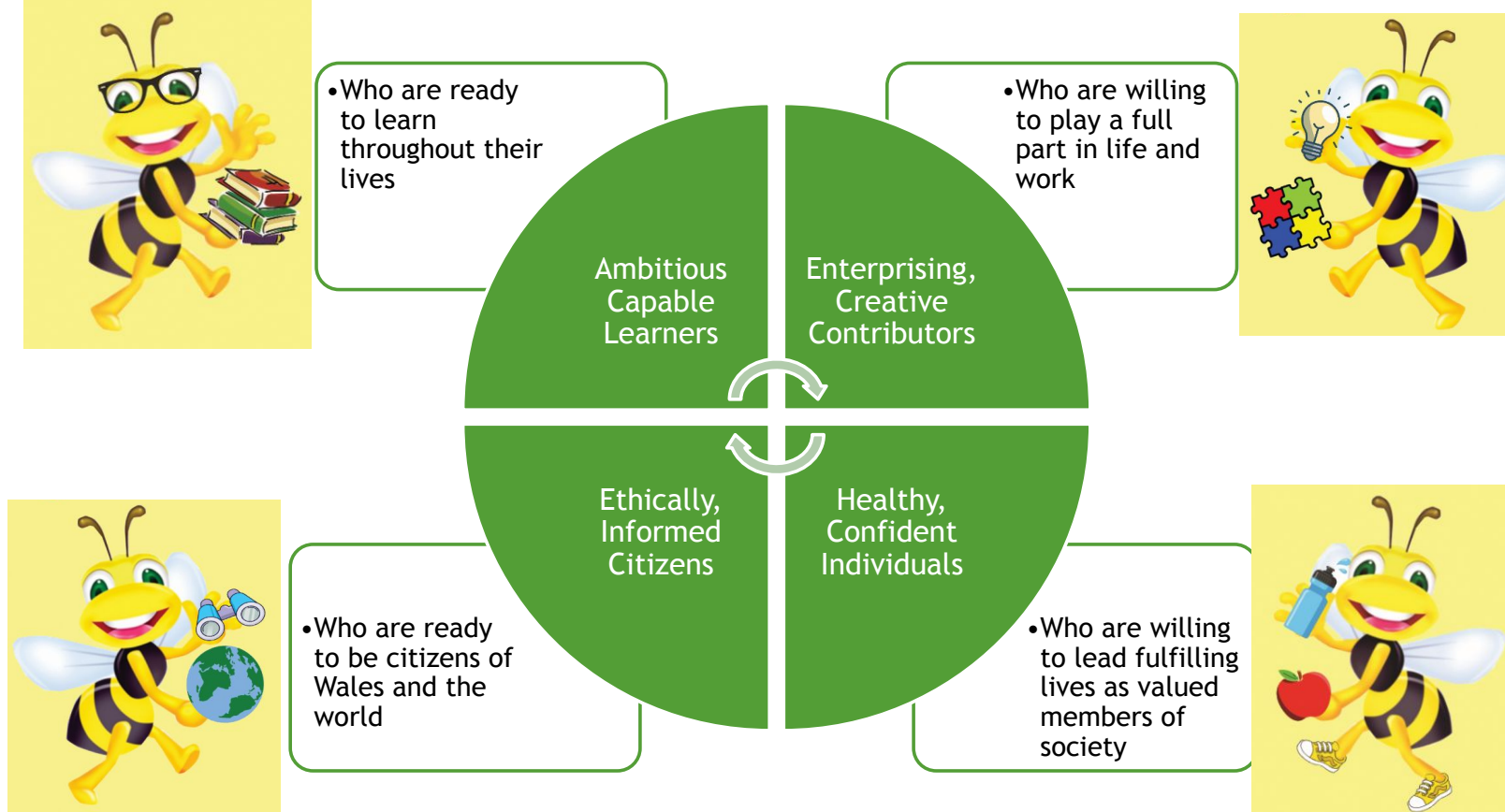


Hiraeth describes the way people feel about their home and landscape.

Cynefin is a Welsh word meaning “habitat”. It carries with it a sense of rootedness, physical, cultural or spiritual. It describes a relationship between the place of your birth and of your upbringing, the environment in which you live and to which you are naturally acclimatised.

The Curriculum for Wales 4 Purposes

The 4 purposes are at the heart of the curriculum at Ysgol Esgob Morgan. They underpin all aspects of our curriculum design, planning and teaching. Below is how staff and pupils collaborated in summarising what they mean for us at Esgob Morgan. Our teaching and learning experiences will always aim for these.



Healthy, Confident and Safe learners

Learners who are healthy,
confident and safe.



We will **BEE** healthy, confident and safe individuals ready to lead fulfilling lives as valued members of society.

Enterprising, Creative Contributors

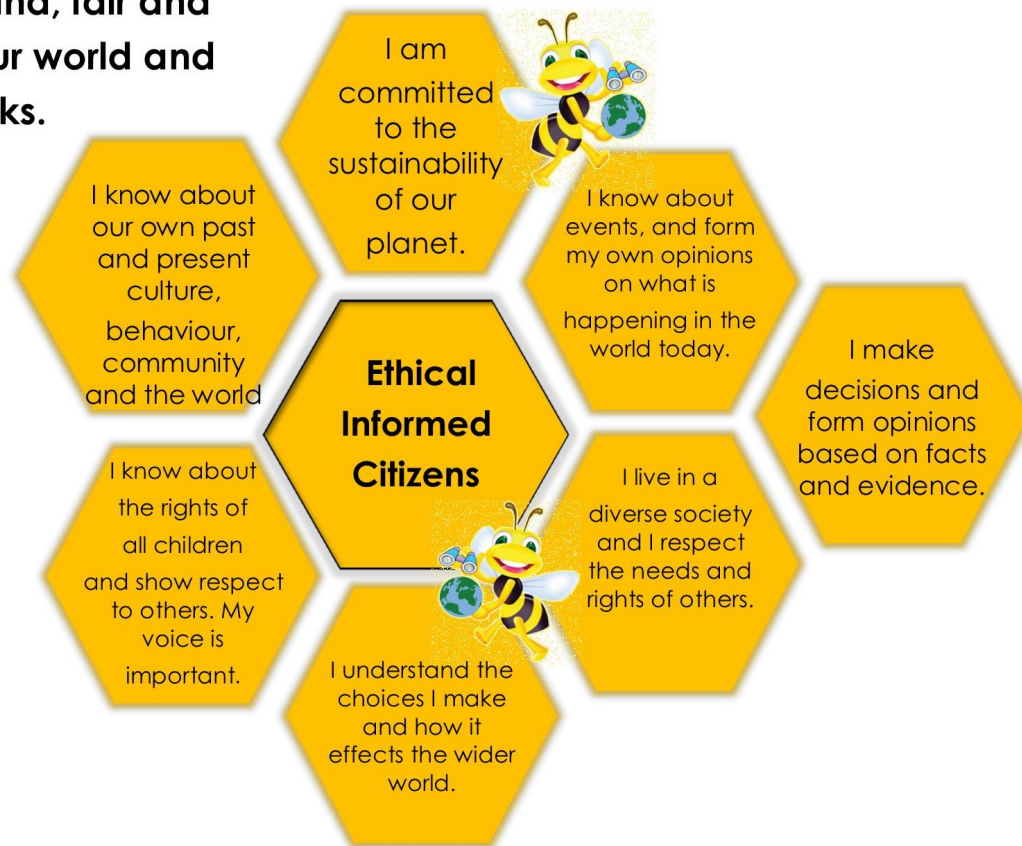
Learners who are able to think of good ideas and solve problems in every area of life and work.



We will **BEE** enterprising and creative contributors ready to play a full part in life and work.

Ethical, Informed Citizens

Learners who are kind, fair and understanding of our world and how it works.



We will **BEE** ethical and informed citizens ready to be citizens of Wales and the world.

Ambitious, Capable Learners

Learners who aim high, always want to learn and are able to do it.



We will **BEE** ambitious and capable learners ready to learn throughout our lives.

Governing Body and Headteacher to ensure the clear communication of shared School Mission, Vision and Purpose.

SLT ensure our School Mission, Vision and Purpose is developed through the curriculum vision.

Pedagogy & Creativity

Christian Values & Diversity

Progression & Assessment

Well-being & Pupil Voice

AoLEs Leaders ensure our curriculum vision is developed through the AoLEs

Language Literacy & Communication

Mathematics & Numeracy

Humanities

Health & Well-being

Expressive Arts

Science & Technology

Governing Body and Headteacher to ensure the clear communication of shared School Mission, Vision and Purpose.

SLT ensure our School Mission, Vision and Purpose is developed through the curriculum vision.

Pedagogy & Creativity

Christian Values & Diversity

Progression & Assessment

Well-being & Pupil Voice

AoLEs Leaders ensure our curriculum vision is developed through the AoLEs

Language Literacy & Communication

Mathematics & Numeracy

Humanities

Health & Well-being

Expressive Arts

Science & Technology



Teaching

- ▶ Excellent teaching is essential if we are to realise the 4 purposes, our vision as a school and the requirements of the Curriculum Framework. Ensuring a high- quality learning environment is vitally important to us at Ysgol Esgob Morgan, for both learners and practitioners. Consistency of ethos in every class across the school is of paramount importance for us to ensure a safe and inspiring learning environment so that our learners can take risks, make mistakes confidently and work in an atmosphere of mutual respect and appreciation of everyone’s efforts.
- ▶ As we evolve the Curriculum for Wales in Esgob Morgan, experimenting and innovating confidently as practitioners is very important to us and we shall collaborate closely within the school, across the cluster and nationally to ensure the highest possible quality of learning experiences and teaching for our learners. This means that we constantly research and learn about effective teaching and value professional learning and research-based practice to develop and improve our teaching skills.





12 Pedagogical Approaches

We reflect upon, share and develop our teaching practices, based on our understanding of the 12 pedagogical principles set out in the Curriculum Framework and the practices we find to be successful in our school.

1. Core Purposes

2. Mindset and the Power of Effort

3. Blended Teaching

4. Deepening Thinking

5. Building on Prior Knowledge

6. Meaningful and Authentic

7. Assessment for Learning

8. Making Powerful Connections

9. Cross Curricular

10. Learning to Learn

11. Positive Relationships

12. Collaboration



The new 6 AOLE's (Areas of Learning and Experience)

The Expressive Arts	Health and Wellbeing	Humanities	Mathematics and Numeracy	Language, Literacy and Communication	Science and Technology
<p>Disciplines developed in this:</p> <p>Art, Music, Dance, Drama, Film and Digital Media</p>	<p>Disciplines developed in this:</p> <p>Physical Health and development, Mental Health, Emotional and social wellbeing.</p>	<p>Disciplines developed in this:</p> <p>Geography, History, Religion, Values and Ethics, Business Studies, Social Studies, Economics, Politics and Philosophy.</p>	<p>Includes 5 interdisciplinary competences:</p> <ol style="list-style-type: none"> 1. Conceptual understanding 2. Communication using symbols 3. Fluency 4. Logical Reasoning 5. Strategic Competence 	<p>Disciplines developed in this:</p> <p>Reading, Writing and Oracy in Welsh, English, International Languages, and Literature.</p>	<p>Disciplines developed in this:</p> <p>Biology, Chemistry, Computer Science, Design and Technology and Physics.</p>

Cross Curricular Skills

We will plan for the development of the following cross-curricular skills within and across the Areas of Learning and Experience using the revised national frameworks.

Literacy	Numeracy	Digital Competence
----------	----------	--------------------

Cross-cutting themes

We shall include and extend the themes below across the curriculum.

Relationships and sexuality education.	Human Rights, education and the United Nations Convention on the Rights of the Child (UNCRC)	Diversity	Careers and work-related experiences	Local, National and international context.
----------------------------------------	----------------------------------------------------------------------------------------------	-----------	--------------------------------------	--------------------------------------------



What Matters Statements for the 6 AOLES

- ▶ The **What Matters Statements** for each area will be the basis of our planning for progression, depth and breadth of skills and knowledge and for learner progress.

The Expressive Arts	Health and Wellbeing	Humanities	Mathematics and Numeracy	Language, Literacy and Communication	Science and Technology
Exploring the expressive arts is essential to developing artistic skills and knowledge and it enables learners to become curious and creative individuals	Developing physical health and well-being has lifelong benefits	Enquiry, exploration and investigation inspire curiosity about the world, its past, present and future	The number system is used to represent and compare relationships between numbers and quantities	Languages connect us	Being curious and searching for answers is essential to understanding and predicting phenomena
Responding and reflecting, both as artist and audience, is a fundamental part of learning in the expressive arts	How we process and respond to our experiences affects our mental health and emotional well-being	Events and human experiences are complex, and are perceived, interpreted and represented in different ways	Algebra uses symbol systems to express the structure of mathematical relationships	Understanding languages is key to understanding the world around us	Design thinking and engineering offer technical and creative ways to meet society's needs and wants
Creating combines skills and knowledge, drawing on the senses, inspiration and imagination	Our decision-making impacts on the quality of our own lives and the lives of others	Our natural world is diverse and dynamic, influenced by processes and human actions	Geometry focuses on relationships involving shape, space and position, and measurement focuses on quantifying phenomena in the physical world	Expressing ourselves through languages is key to communication	The world around us is full of living things which depend on each other for survival
	How we engage with social influences shapes who we are, and affects our health and well-being	Human societies are complex and diverse, and shaped by human actions and beliefs	Statistics represent data, probability models chance, and both support informed inferences and decisions	Literature fires imagination and inspires creativity	Matter and the way it behaves defines our universe and shapes our lives
	Healthy relationships are fundamental to our well-being	Informed, self-aware citizens engage with the challenges and opportunities that face humanity, and are able to take considered and ethical action			Forces and energy provide a foundation for understanding our universe
					Computation is the foundation for our digital world



Our Curriculum

Core Experiences

Organised whole class learning experiences including focused tasks.

Teacher planning adapted to reflect pupil voice.

Learning experiences mapped across 4CP, WMS and Christian Values.

Learning experiences mapped to ensure progression.

Mid Term Plans.

YOU Choose

Independent learning opportunities.

Pupil led with teacher input.

Learning experiences planned by pupils and teachers around the main theme. They decide which they would like to do and when.

Learners to independently choose how to solve problems and present their work.

Weekly.

Immersion Weeks

Responsive and flexible.

Pupil led with teacher input.

Deep dives that are responsive to the needs of our pupils and reflective of events in wider society.

Reflective of the 4CP and AOLES.

Half termly
(or when needed).

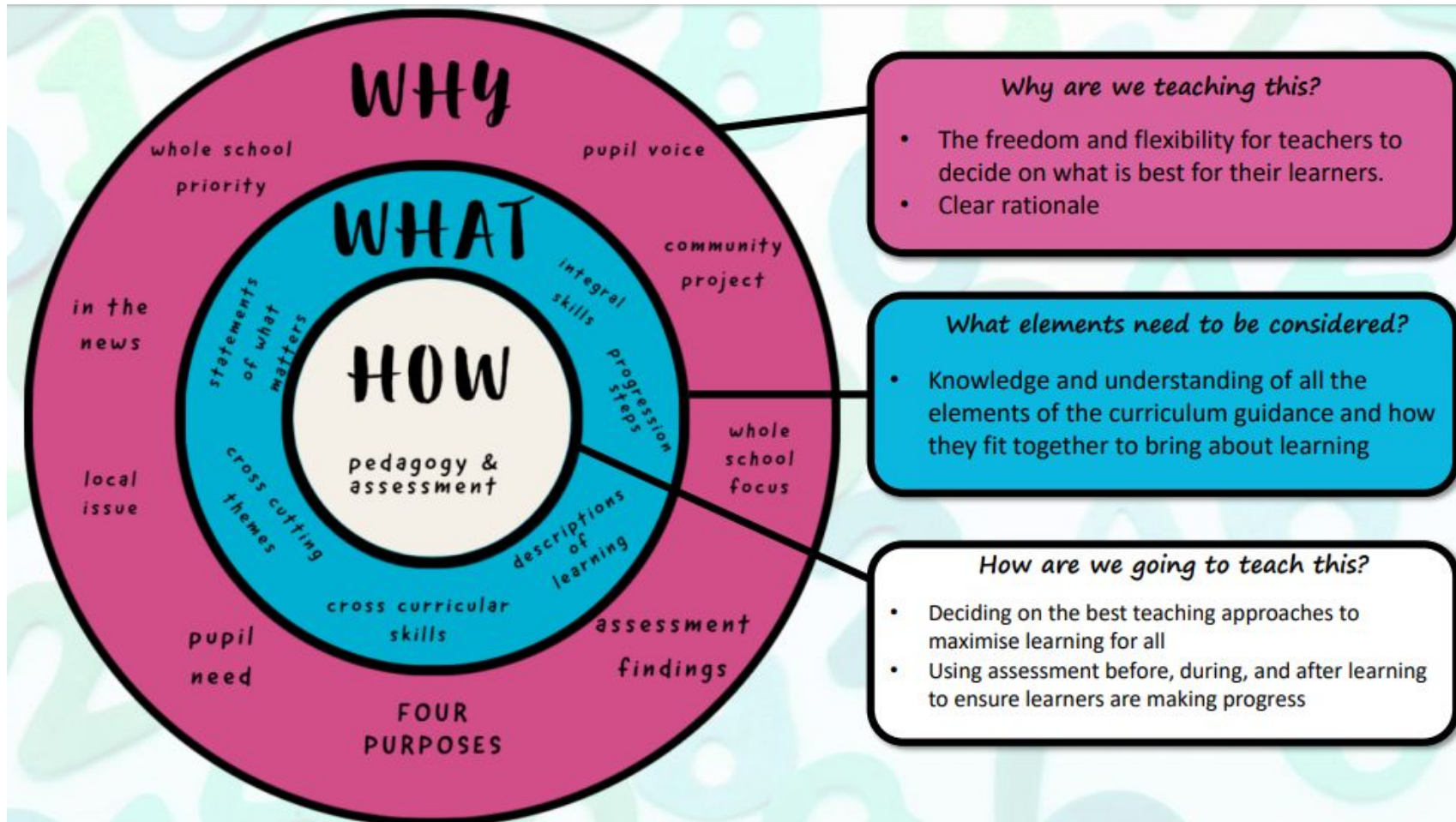


Topic Overviews

	Year 3	Year 4	Year 5	Year 6
Autumn	Defenders	Influencers	Victorians	Conflict
Spring	Habitats in Wales	Cause and Effect	Today's World	Location, Location, Location !
Summer	Growing	Responsibility	Respect	Lights, Camera Action!



Principles of planning





Planning

Long term overviews are created by teachers to plan for a broad and balanced curriculum. Learners then contribute to mid-term plans that are inputted on Taith360. These mid-term plans are flexible and are adapted to suit pupils voice throughout the terms. They are then evaluated and progressed is assessed.

Weekly plans are also created to ensure teaching and learning is adapted to suit all abilities and needs within the classrooms.





Universal Offering

At Esgob Morgan we ensure that all pupils have the opportunity to reach their full potentials. We aim to provide the greatest possible support and challenge to all pupils.

We offer a variety of interventions to support pupils with:

- Literacy and Numeracy skills
- Speech and Language skills
- Behaviour, Emotional and Social development
- Transition support
- Fine and Gross motor skills

Teaching and learning experiences are also adapted to suit the needs of the pupils.





Assessments

► Summative Assessments

Summative assessments provide us a snapshot of pupils understanding and are used to make decisions on future planning and support. These are used to evaluate the long term information retention of a pupil. This can take many forms, including, tests, projects and presentations. These allow teachers to measure student progress at the end of a unit or term. They also help identify areas for development individually, by year group or even whole school.

► Formative Assessments

We use formative assessments to evaluate pupils learning and understanding. They are used to monitor pupils progress and identify areas where further explanations, teaching and learning may be needed. This allows teachers to adjust planning and pedagogical approaches to better suit the needs of the pupils. It also provides the opportunity to provide timely feedback that can help pupils improve their understanding and work.



Formative Assessments

Formative assessment strategy / principle

Class climate and culture

Growth Mindset, 5 creative habits of mind, celebrating mistakes, embracing challenge.

Involvement of learners

Involving learners in the planning of topics and decisions throughout the school (councils and listening to learners feedback).

Talking Partners

Weekly Talking partners
Group Work

Learning objectives and Success Criteria

Pupil contribution to planning
Pupil led success criteria

Prior / current knowledge questioning

Effective questioning / Quizzes

Feedback -

Self and Peer feedback
Verbal and Written feedback
Learning Zones

Adaptive Teaching and challenges

Eliminating ability groups

Readiness to Learn

Pupil expectations



Assessment and Progression

These are tools we use to help us assess progression.

Assessment

- ▶ Termly assessments (internal)
- ▶ National progress assessments
- ▶ Professional judgements
- ▶ Self and Peer assessments
- ▶ Professional Dialogues
- ▶ Termly Review Meetings
- ▶ ALN & Inclusion Meetings
- ▶ Moderation school and cluster based

Progression

- ▶ Taith360
- ▶ Planning Meetings
- ▶ Feeding forward
- ▶ Transition between Infants, Secondary schools and classes



Immersion Days / Weeks Themes

All year groups will have experiences planned for the following days / weeks. They will be planned following the 4CP, WMS, Christian Values and pupil voice. All experiences ensure progression throughout all year groups.

Autumn 1	Autumn 2	Spring 1	Spring 2	Summer 1	Summer 2
Our Country	INTO Film	St Dwynwen's Day	St David's Day	Mental Health Awareness Week	Financial Ed
Health and Well-being Week	Expressive Arts Week	Pancake Day	Easter - Holy Week	URDD	World of Work
Harvest	The Christmas Story & Advent	Shrove Tuesday	STEM projects Y3/4	Ramadan / Eid (Islam) - Y3	Refugee Week
Mabinogion stories / tales	Remembrance Day	People, Places and Planet Week	Holi Week (Hinduism) - Y5	Cardiff / Outdoor Ed Y4/5 (alternate)	Sports Week
Forest School Y3	Anti Bullying Week	Fairtrade Fortnight	Passover (Judaism) - Y6	Forest School Y5	Sports Day
	Children in Need	Chinese New Year	F1 in schools project (STEM) Y5/6		School Production - Y6
	Diwali (Sikhism) - Y4	F1 in schools project (STEM) Y5/6	Outdoor Ed - Glan Llyn Y3		
	Sangha (Buddhism)	Forest School Y4	London - Y6		
	Forest School Y6				



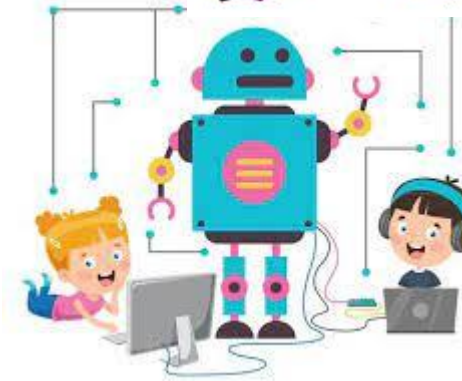
Extra-Curricular Activities

At Esgob Morgan we also offer a wide range of extra-curricular activities. These activities are to enrich and develop pupils skills, and to also provide our pupils with a variety of learning experiences.

Examples of extra-curricular activities provided...



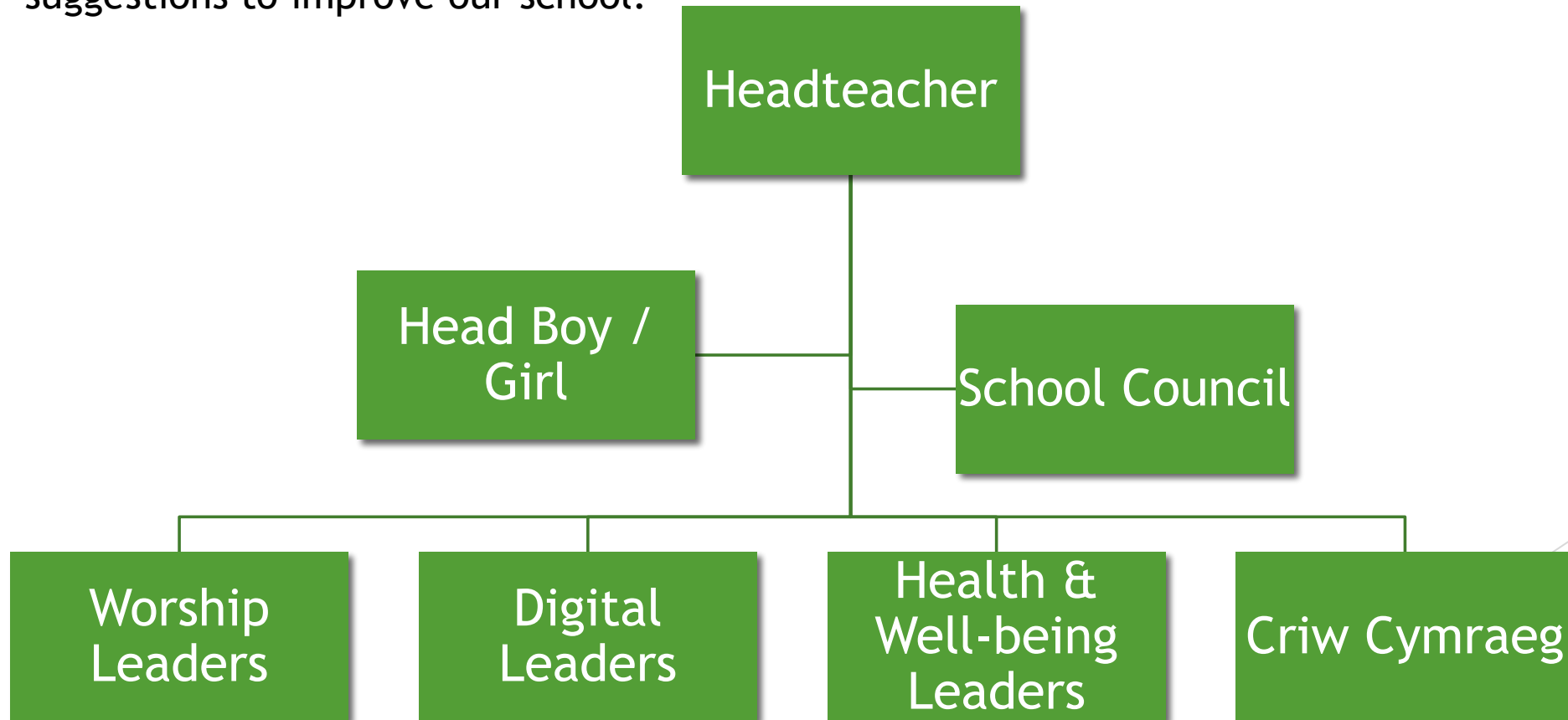
DANCE





Pupil Voice - Student Parliament

All learners are members of a council. EVERY child and EVERY voice matters to us! These councils meet every half term, they then feed back to the school council, head boy and girl who also meet with the headteacher to discuss new ideas and suggestions to improve our school.





Our School Day

Wrap Around Care

The school has great wrap around care to support all families. We offer Breakfast Club, After School Club and Holiday Club. After school club is operated separately to the school and is managed by Miss Amie Pearsons. See the school website for information about 'Little Stars' afterschool and holiday club.

Breakfast Club: 07.50am – 08.45am

After School Club: 03.15pm – 6.00pm.

We also offer a great 'Summer Holiday Enrichment Programme' (SHEP) that is free for all pupils, that includes breakfast and lunch. For more information about SHEP see our school website or speak to Miss J Martin at school regarding this.

Attendance and Punctuality

If your child is unable to attend school for any reason please inform the class teacher of the reason for your child's absence from school on the morning of absence. If we do not hear from you, we will give you a text or a call to make sure that the children are safe. The morning session begins at 09.00am. It is a big help if the children could arrive to start at the day for 09.00am as it can be quite upsetting for your child if they happen to be late. In the unlikely event that punctuality or attendance should become a problem we will call the Educational Social Worker to ensure the child's welfare is being prioritised, and ensure we are doing our best to help in any situation. A letter to school upon the child's return should cover all absences.

We are to discourage parents from arranging holidays during the first school term in line with the LEA's policy, however requests will be considered for a maximum of 10 days to be granted in any other part of the school year. Please do call in to see the Headteacher for further details.

Time	
7.50 am – 8.45	Breakfast Club (30p a session)
9.00 – 9.10	School Opens / Registration
9.10 – 9.30	Session 1
9.30 – 10.30	Session 2
10.30 – 10.45	Morning Break
10.45 – 12.00	Session 3
12.00 – 1.00	Lunch
1.00 – 2.00	Session 4
2.00 – 3.00	Session 5
3.00 – 3.15	Assembly (See Corporate Worship)
3.15 – 6.00 pm	After School Club (Rates available from school)



School Uniform

We are proud of our school colours and it is pleasing to see children wearing their uniform in school. All pupils who represent the school should wear it. Indeed, your support would be appreciated in fitting all pupils with school uniform for regular attendance as well as special occasions. Colours are green sweatshirts, yellow polo t-shirts and grey or black trousers. It is a great help to us all if you could label your children's clothing – it allows us to return the lost jumpers!

Pupils of Esgob Morgan have designed the badge shown on our sweatshirts. The picture represents the Archbishop holding hands with children and so reflects the link our school has with the Church and community in general. The writing shows our commitment to the Welsh language.

Our school P.E kit is black shorts or school joggers, a white t-shirt and trainers or plimsolls. Sweatshirts, jogger and polo shirts can be purchased from Jean Emporium, Rhyl or online. You can find the links to the online shops on our website (www.EsgobMorgan.co.uk).





School Term Dates

You can find our school term dates and other important dates on our calendar on the school website.

www.EsgobMorgan.co.uk

School term dates 2023/2024

Autumn term 1

1st September 2023 to 27th October 2023

Autumn half term holiday

30th October 2020 to Friday 3rd November 2023

Autumn term 2

6th November 2023 to 22nd December 2023

Christmas Holiday

25th December 2023 to 5th January 2024

Spring term 1

5th January 2024 to 9th February 2024

Spring half term holiday

12th February 2024 to 16th February 2024

Spring term 2

18th February 2024 to 22nd March 2024

Easter holiday

25th March 2024 to 5th April 2024

Summer term 1

8th April 2024 to 24th May 2024

Early May bank holiday

6th May 2024

Summer half term 2

27th May 2024 to 31st May 2024

Summer term 2

3rd June 2024 to 19th July 2024

Training Days

1st September 2023

6th November 2023

22nd December 2023

8th January 2024

8th April 2024

19th July 2024



Partnership with Parents

We have a very positive partnership with parents. Our school's website is regularly updated, and regular newsletters keep parents well informed about all aspects of school life.

We also have a very active school Facebook and Twitter page that is updated regularly and a great way for parents to get to see what happens here at Ysgol Esgob Morgan.

Staff / Parent Contact Time

You are more than welcome to see your child's class teacher at the end of the school day. Alternatively you can arrange with your child's class teacher an appointment.

Reports / Open Evenings

In the Autumn term we hold an open evening when parents are invited to come into the school to see the school in action, and welcome prospective pupils and parents, as well as giving the opportunity for everyone to have a look around. In October you will be invited to an evening to discuss your child's progress. Another evening will take place in the Spring Term, followed by a full report on your child's progress in the Summer term. The report will be followed by an opportunity to discuss it if it is required.

Newsletters

Letters are a vital method of communication so we send regular newsletters with information about school events and celebration of things that are happening in school. A copy of the latest letter can be found on the notice board just outside the school gates and on the school website.

Sometimes though letters do not make it home! In an attempt to combat this, along with our Eco-School status, you can, if you wish, receive letters via email. Simply give your email address to the school office and we can add you to the list. The school will ensure that no one has access to, or sees your email address.

School Website

The school has a website which is an important communication tool between school and home. The address is www.esgobmorgan.co.uk . We update this regularly and all newsletters will be posted here too.



PTFA ~ *(Parents, Teachers & Friends Association)*

This is a group made up of parents, teachers & friends of Esgob Morgan.

The team regularly meets to arrange events for pupils which raise funds to provide the school with extra materials. These events also provide social opportunities for parents and families.

All parents and staff are welcome to join - in whichever and whatever way possible. The more the merrier, and it's a great way to have your say in how money is spent for our children.





School Meals & Healthy Snacks

School meals are a great, healthy option for your children. The cost of school meals is £11.00 per week - £2.20 per day. We now take payments using ParentPay – an easy to use online payment system. Where this is not possible we issue a card that can be used anywhere with a Pay Point sign.

Free meals are available to some. Please contact Mrs Thomas-Garnett in the school office who can give advice on applying and completing forms. You may be entitled to this benefit and not know!

Your children may also bring their own packed lunches and snacks – we encourage healthy lunch boxes and snacks as we are a member of the Healthy Schools Network, and have recently received the National Quality Award for Healthy Schools.

We have a fruit tuck shop available to all pupils on a daily basis. The children are responsible for choosing their own fruit and paying as part of their independent skills and development. This is done on their way out to play at the start of the morning break.

Again we encourage healthy snacks if they bring their own snacks for morning.

Many pupils enjoy physical activity and a healthy snack at break time. The pupils in Year 3 and Year 4 who run the fruit tuck shop take pride in their responsibility. They use their real life problem solving skills very confidently, and make well thought out, considered decisions. For example, they reduced the price of an apple from 50p to 20p to increase sales and encourage healthy eating. (Estyn, 2018)



Gwobr Ansawdd Genedlaethol
Rhwydwaith Cynlluniau Ysgolion Iach Cymru



Welsh Network of Healthy School Schemes
National Quality Award



Admissions

The majority of our pupils live in St. Asaph and transfer happily from St. Asaph V.P. Infant School. We do admit pupils from outside St. Asaph if numbers allow and there are vacancies. The forms are provided by county. Any parent wishing to register their child at Esgob Morgan that has not attended the VP Infants can request an admissions form directly from [Denbighshire County Council on 01824 712621.](#)

Most pupils transfer to Denbigh High School in the September following their eleventh birthday. There are many high schools from which to choose however, including Ysgol Emrys Ap Iwan, Christ the Word, St Brigid's (Catholic Faith Led Education), Rhyl High School, Prestatyn High School or Ysgol Brynhyfryd. We also have tremendous success in building our children's ability in Welsh to offer places at Ysgol Glan Clwyd (Welsh Medium Education).

The Director of Education invites parents to express their preference of a secondary school for their child. A parental preference form is sent to each parent/guardian. Parents are invited to request further information on the schools if they so require. They may then express a preference for any of the schools listed or may insert the name of another school should they prefer that school to those listed. Confirmation of acceptance is then sent from the secondary school in mid-March. A more detailed explanation is available in the County Schools Information.

Admission of pupils with disabilities

- ▶ The school has access and facilities for pupils with disabilities. All admissions are the responsibility of the Local Education Authority. When a child with a physical disability is admitted we will work in close conjunction with all external agencies involved to ensure needs are met. All pupils are treated equally and we ensure that we;
- ▶ Promote equality of opportunity between disabled persons and other persons
- ▶ Eliminate discrimination that is unlawful under the Disability Discrimination Act (2005)
- ▶ Eliminate harassment of disabled persons that is related to their disabilities
- ▶ Promote positive attitudes towards disabled persons
- ▶ Encourage participation by disabled persons
- ▶ The Disability Discrimination Act (2005) requires that all schools should plan to increase access to school for disabled pupils. At Esgob Morgan, we will endeavour to ensure that the school becomes more readily accessible to all pupils, parents, teachers and visitors who may have physical disabilities. The school works closely with Denbighshire County Council in order to ensure that all the requirements, listed on the action plan, are carried out with given timescales.



Matters of Concern

If you have any issues or concerns regarding any aspect of our school life we hope that you will come in and see the class teacher, the Headteacher or the Deputy Headteacher. We welcome all your comments as it's the only way to ensure we do our very best for our children. If this does not help with your concern then you are welcome to take up the issue with the Governing Body or Local Education Authority, depending upon the nature of the problem. The school has an 'open door' policy and we pride ourselves on listening to and working through any concerns together. By working closely with the parents and community we can ensure that the children receive the most enjoyable education. This partnership has resulted in the happy school we see today.

Safeguarding & Child Protection

The School follows the All Wales Child Protection Procedures 2008. The Headteacher is the Designated Child Protection & Safeguarding Officer, in his absence, the Deputy Headteacher is the Deputy Child Protection and Safeguarding Officer. Should you require further information, the Child Protection and Safeguarding Policies are available from the school office.

Charging Policy and Remissions

To tie in with the Education Reform Act Section 110 we have to have a charging policy for educational visits outside school and certain functions in school during school hours. The function is costed and a breakdown is given to parents with details of voluntary contributions, which enable it to take place. We always request your permission for these events and functions and they are always well supported. Any parent in receipt of benefits may claim full remission for overnight visits though class day trips are not subject to remission.



One Way System

It can get quite congested in Ffordd Siarl at of our school day!

So, we try to operate a one way traffic system. It would be a great help if you could turn 2nd right into Tan Y Bryn to Ffordd Siarl to approach and leave school by Ffordd Siarl. Due to the limited amount of parking and turning space we ask kindly if parents could avoid driving into school grounds unless absolutely necessary.





Diolch / Thank you

I do hope that you find the information in this prospectus useful. We truly believe that children learn the best when they are happy and when they are experiencing things first hand. We always put the children first, we listen to them, we talk to them and we understand their needs.

Our Personal and Social Education (PSE) approach to all aspects of school life has allowed us to become the happy, hardworking and achieving school we are today. We strive to be the centre of the community, and by working together we can aim high and achieve excellence.

Address	Contact Number	Email
Ysgol Esgob Morgan Ffordd Siarl St Asaph Denbighshire North Wales LL17 0PT	01745 583 690	Esgob.morgan@Denbighshire.gov.uk